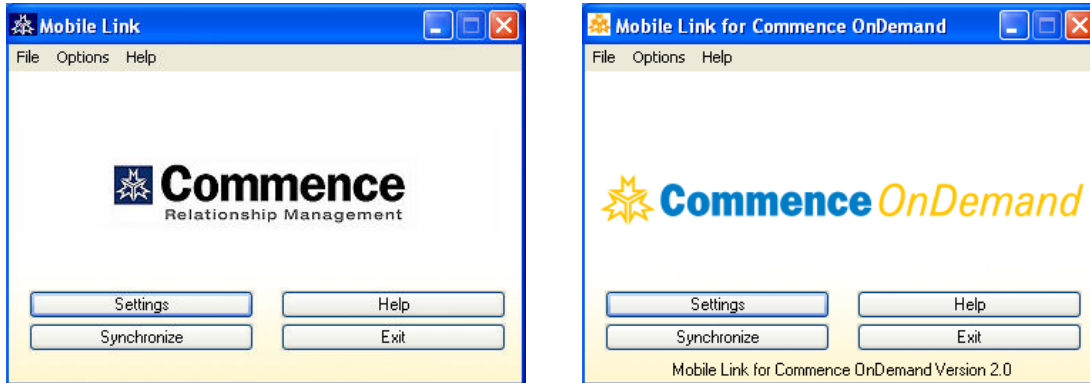


# Commence Announces New Mobile Link Add-On Module

## Frequently Asked Questions

### What is Commence Mobile Link?

*Commence Mobile Link is a new add-on module that provides a direct link between components of your Commence database and the latest Blackberry, Palm and Window's Mobile Smart Phone devices.*



### What data can I synchronize using Commence Mobile Link?

*Commence Mobile Link allows you to directly synchronize your contacts, calendar, tasks, and notes.*

### What Mobile Devices are supported with Commence Mobile Link?

*Commence Mobile Link supports the Blackberry, Palm and Windows Mobile devices.*

### Do I still need to utilize Microsoft Outlook® to synchronize my data?

*No, The new Mobile Link module provides a direct link between Commence and your Smart Phone device. Synchronization with Microsoft Outlook is no longer required.*

### How does it Work?

*The Commence Mobile Link is a plug-in software module that resides on your desktop PC and interfaces with software provided by your Mobile Device manufacturer. To store contact, calendar, tasks and notes on your mobile device you simply connect your USB cable provided by the device manufacturer to your PC and follow the instructions for data synchronization. Commence Mobile will do all the rest.*

**Does Commence Mobile Link wirelessly update my Smart Phone when I am away from my company or home office?**

*Your e-mail will be updated wirelessly as part of your wireless Internet service, but you will need to utilize the Mobile Link software to periodically synchronize your data with your local PC for updated contacts, calendar, tasks and notes.*

**What are the requirements for Commence Mobile Link?**

*Commence Mobile Link is available for customers using the latest version of the Commence Designer Edition software, Version RM 3.6, as well as Commence On-Demand, the company's new web-based hosted CRM solution.*

**How much does the Mobile Link Module cost?**

*The Commence Mobile Link is offered under an annual subscription plan and cost \$12.95 per user per month for US based customers. Prices may vary by country.*

**If I have 10 or more Commence licenses and only wish to have 2- 3 people use the Mobile Link product, do I have to purchase it for all 10 users?**

*No, you can purchase a subscription only for those people who will use the Commence Mobile Link module.*

**If I require assistance, before, during or after implementation, whom do I contact?**

*Assistance for the Mobile Link product is provided by Commence Corporation's Customer Service department and covered under the same Technical Support agreement you have for the Designer Edition or Commence On-Demand product.*

**When will the Commence Mobile Link module be available?**

*Commence Mobile Link will be available starting March 16, 2009.*

**How do I order the Mobile Link subscription?**

*Commence Mobile Link may be ordered directly through Commence Corporation by calling Commence Sales at 1-877-COMMENCE. For customers outside the United States, check with your Commence regional distributor.*